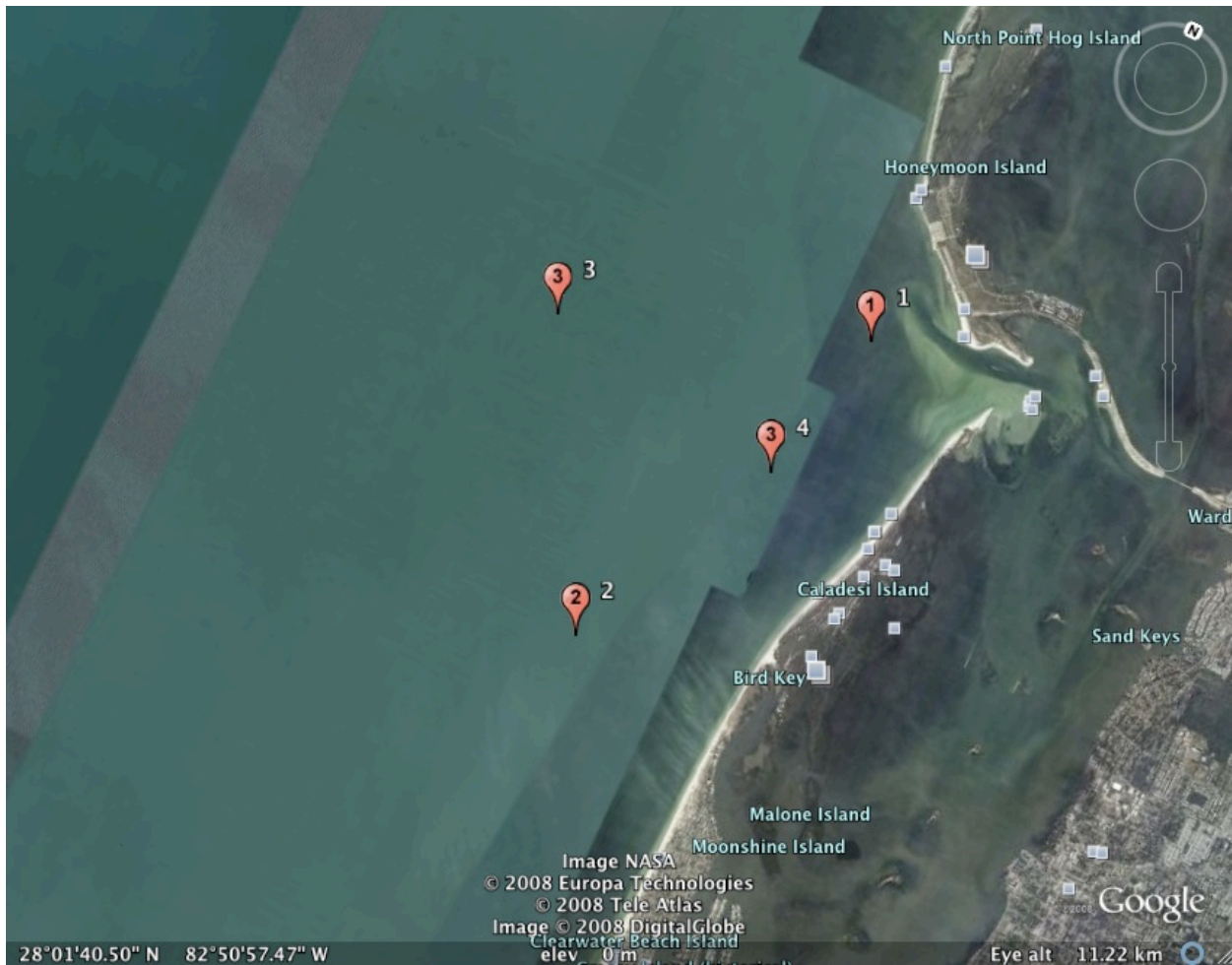


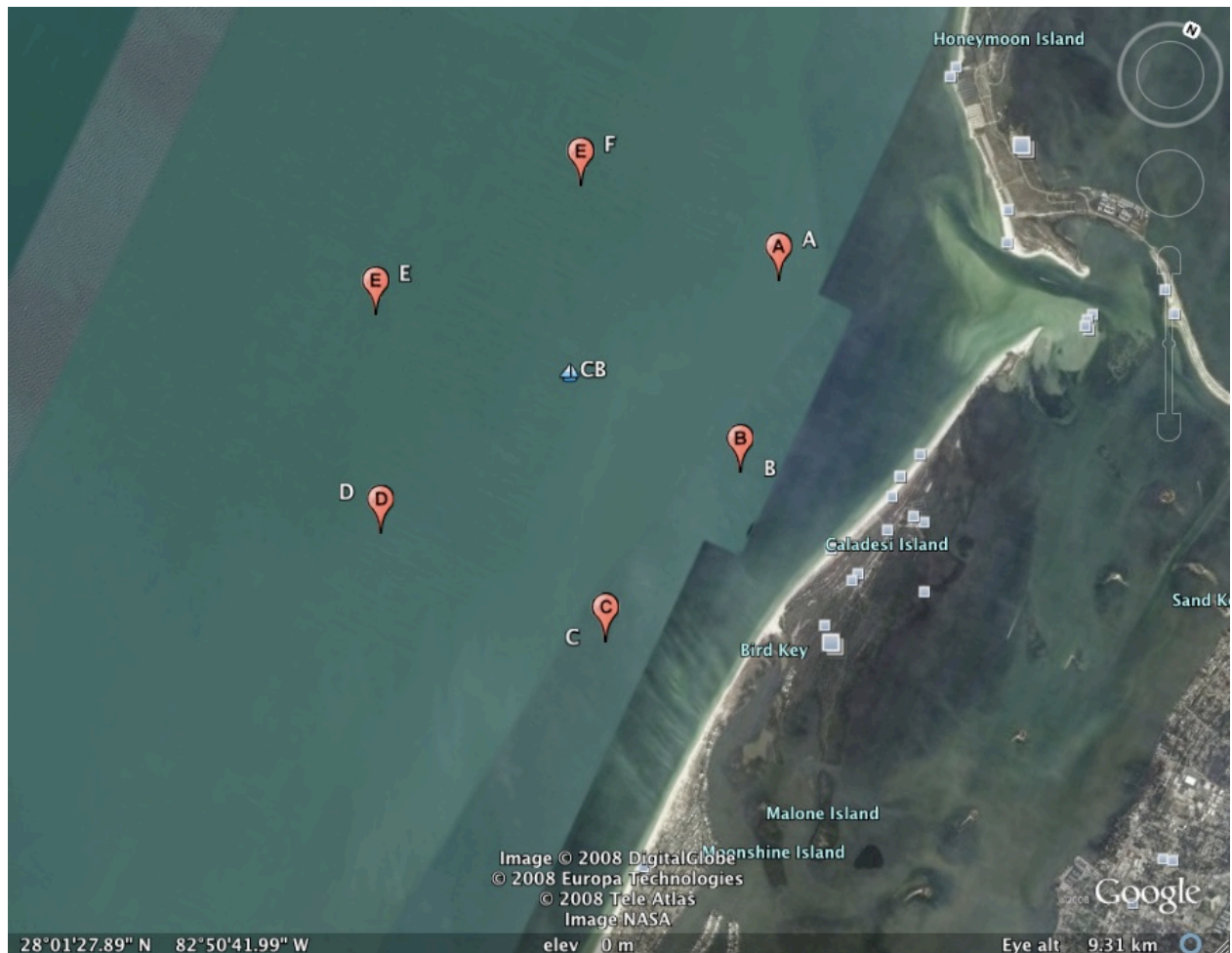
Dunedin Boat Club
 Notice of Race
 Attachment "B"
 updated 9.8.8

Kaneski Course :The course is located south and west of the seaward mark for Hurricane Pass.



Mark	Lat	Long
#1	N28° 03.03'	W82° 49.90'
#2	N28° 00.60'	W82° 50.60'
#3	N28° 02.40'	W82° 51.60'
#4	N28° 02.11'	W82° 50.12'

Dunedin Cup “Star” Course : The course is located south and west of the seaward mark for Hurricane Pass. This is only a possible course for the Dunedin Cup, please visit www.dunedincup.org for the actual NOR and Sailing Instructions for the Dunedin Cup.



Mark	Lat	Long
A	N28° 02.650'	W82°50.391'
B	N28°01.750'	W82°50.131'
C	N28°00.750'	W82°50.391'
D	N28°00.750'	W82°51.730'
E	N28°01.675'	W82°52.267'
F	N28°02.650'	W82°51.573'

Mark	Lat	Long
CB (Subject to change)	N28°01.719'	W82°51.228'